



Somerset Road, London, W4 5DN

£499,950

WHITMAN & CO.

SALES · LETTINGS · COMMERCIAL

- Bright and spacious apartment
- 17'3 Reception room
- Close to numerous amenities
- Three bedrooms
- Private garden area
- Triple aspect apartment

Tenure - Leasehold
 Lease length - 87 years remaining
 Ground rent - £10 pa
 Service charge - £1496 pa
 Local authority - Ealing
 Council tax - Band D

THE PROPERTY

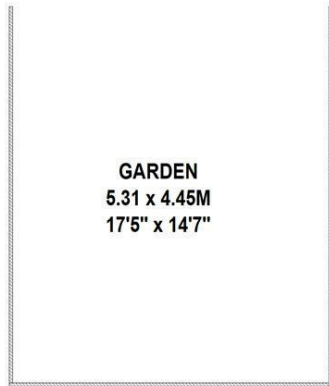
A well-presented light and spacious top floor three bedroom apartment located on this quiet residential street a short walk from Chiswick High Road. The flat totals 775 sqft with the accommodation comprising a good size reception room with space for a dining table and sofas, three bedrooms, bathroom with full bath with shower over, fitted kitchen, entrance hall with storage, south facing private garden area (17'5x14'7). The flat is located within a 10-minute walk of Chiswick High Road's shops, cafes and restaurants. Transport links include Turnham Green and Chiswick Park stations, local bus routes and the A4/M4 for routes in and out of London.

Somerset Road, W4

Approximate gross internal area

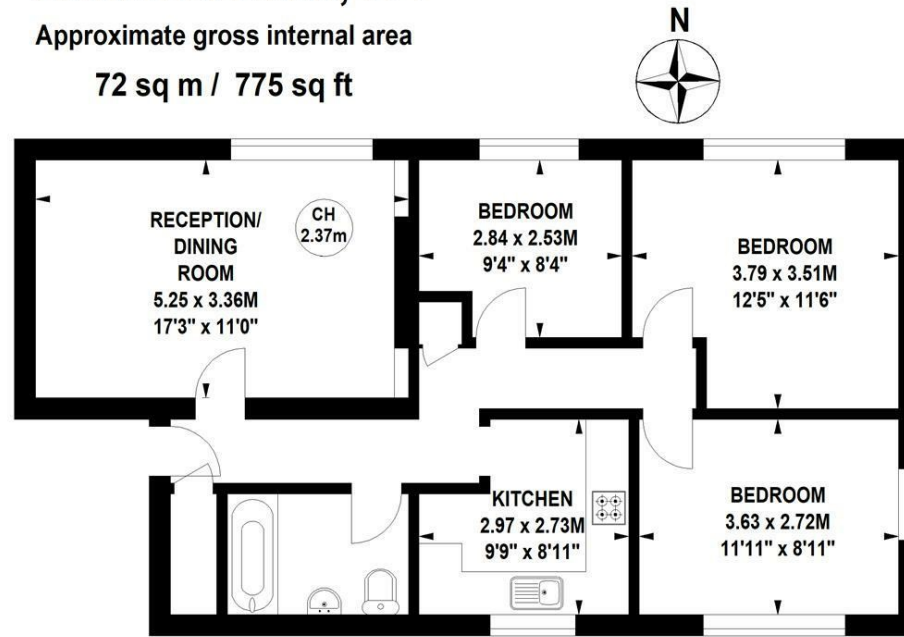
72 sq m / 775 sq ft

Key :
 CH - Ceiling Height



Ground Floor

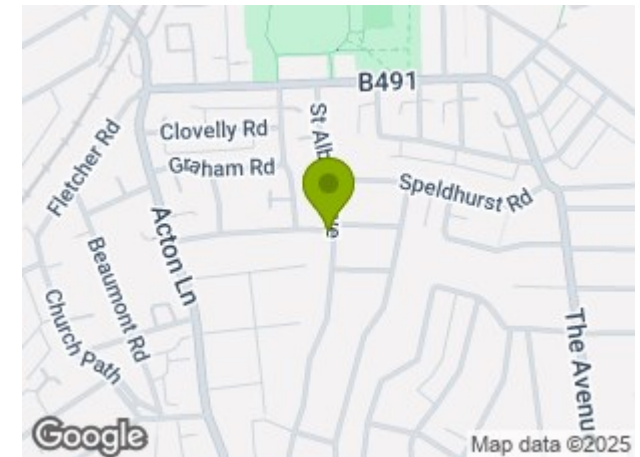
(Not shown in actual location / orientation)



Second Floor

Not to scale, for guidance only and must not be relied upon as a statement of fact.
 All measurements and areas are approximate only

SITUATION



5-7 Turnham Green Terrace, Chiswick, London, W4 1RG

Tel 020 8747 8800

E-mail sales@whitmanandco.com

Website www.whitmanandco.com